

LIGHTER BY DESIGN

Light as a feather yet extremely sturdy –
the new **ELB Light Container**

NEW!



ELB Light Container – the all-round superstar for all everyday situations

SSI SCHAEFER has developed more than 2,000 types of high-quality warehouse, order picking and transport containers. Our know-how has continually developed through years of experience, use of state-of-the-art technologies and intensive collaboration with customers. Whether boxes are needed for electrical parts, automotive accessories, mail order items, computer chips, food or paperback books – we can develop the right solution.

We have brought together our knowledge from all special applications to produce an innovative high-tech product. This all-round container, designed for everyday use, is feather light, extremely sturdy and most importantly sensibly priced. Designed using a new material and new tool technology, the ELB Light Container is a high-quality product which can be used for virtually any purpose and best of all: it's affordable for all!



1| Stacking rim

Profile-shaped, all-round stacking rim

2| Ergonomic grip opening

Ergonomically shaped open hand grip on both face ends

3| Lifting slot

Lifting slots for handling units

4| Lid

Closes to be dust-tight, sealable

ELB containers can also be safely stacked with the lids fitted

5| Corner post

Basic construction resistant to twisting

Base variants

Depending on the version, the different bases on the containers of the ELB series allow for loads of 40 – 150 lb. Perpendicular sides optimise internal dimensions. Specially-designed corner posts facilitate high stacking loads and easy cleaning.

1| Smooth base (standard version)

For manual handling or transferring items to modular shelving.

2| Ribbed base

Reinforced, diagonally ribbed base with extra all-round ribs (tread) and optimised radii for quiet transport on conveyors.

3| Reinforced VS welded base

Welded base plate with sloped base and shaping for optimal running properties and high loads.



Hinged lid

Lid hinged on one side with fixing clamps



Folding lid

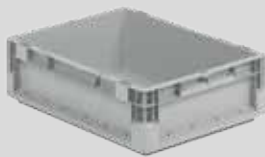
Hinged, two-part folding lid with toothed elbows



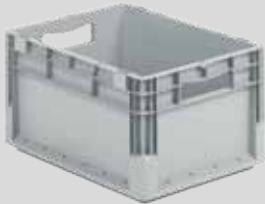
Technical data

The Euro light container has:

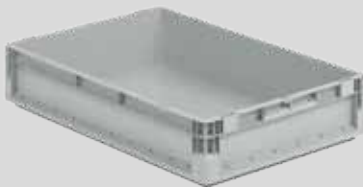
- a load of 40 lbs.
 - a max. stacking load of 500 lbs.
- (details for versions with standard bases)

**ELB 4120**

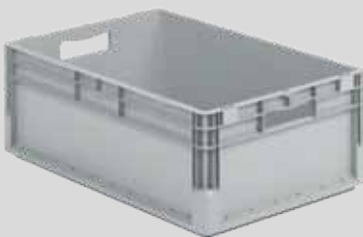
External dimensions: L 15.7 x W 11.8 x H 4.7 in
 Internal dimensions: L 14 x W 10.0 x H 4.5 in
 Volume approx.: 0.37 cu.ft.
 Shell hand grip at front

**ELB 4220**

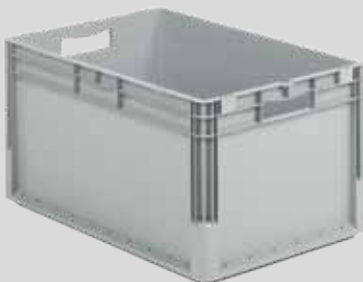
External dimensions: L 15.7 x W 11.8 x H 8.7 in
 Internal dimensions: L 14 x W 10.0 x H 8.4 in
 Volume approx.: 0.69 cu.ft.
 Grip opening at front

**ELB 6120**

External dimensions: L 23.6 x W 15.7 x H 4.7 in
 Internal dimensions: L 21.9 x W 14.0 x H 4.5 in
 Volume approx.: 0.80 cu.ft.
 Shell hand grip at front

**ELB 6220**

External dimensions: L 23.6 x W 15.7 x H 8.7 in
 Internal dimensions: L 21.9 x W 14.0 x H 8.4 in
 Volume approx.: 1.53 cu.ft.
 Grip opening at front

**ELB 6320**

External dimensions: L 23.6 x W 15.7 x H 12.6 in
 Internal dimensions: L 21.9 x W 14.0 x H 12.4 in
 Volume approx.: 2.19 cu.ft.
 Grip opening at front

SCHAEFER SHELVING

10125 Westlake Dr
 Charlotte, NC 28273
 855.300.2636
 info@schaefershelving.com
 www.schaefershelving.com